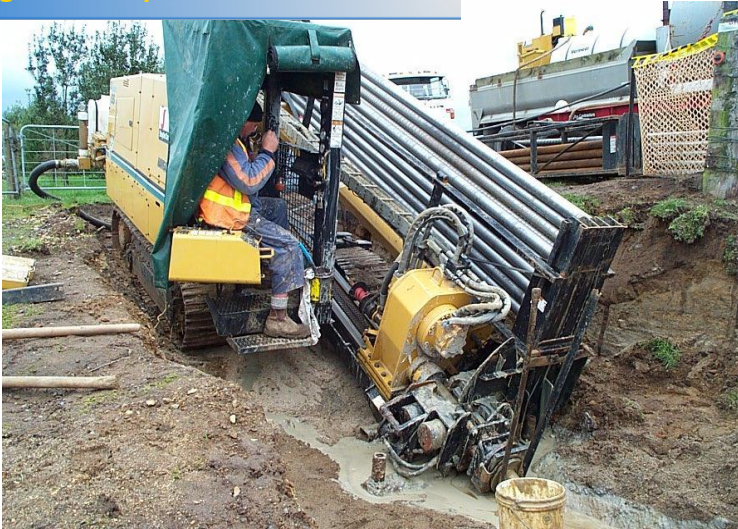


180mmØ steel for Natural Gas Corporation.



Smythe Contractors drilled and installed a 180mmØ high-pressure steel gas main under the Waikato River North of Hamilton. The product pipe had bending limitations and the construction site had physical restraints. The client needed assurance that the pipe would not be over stressed by over bending. A computer bore plan was used to design the drill path and ensure the minimum bend radius was

not exceeded. In order to achieve this it was necessary to establish the drill in a shallow excavation. This would not have been realised if a bore plan had not been undertaken.

Knowing the exact depth under the river was critical to satisfy resource Consent conditions. Computer bore planning calculates the position and takes the guesswork away from the drilling operator. Smythe Contractors is the only drilling contractors in NZ currently utilising computer bore path planning.



Overview during pipe pull back

The launch pit and drill site were well managed to eliminate all risk of drill mud escaping to the environment. The project went exactly to plan and was completed successfully in four days.

Further information on our services can be obtained by contacting Neil Vanner or Mike Smythe:



Smythe Contractors Ltd
PO Box 158
CAMBRIDGE

PH: (07) 827-5925
Fax: (07) 827 5197

Email: nodig@xtra.co.nz
Web site: www.smythecon.com

Breaking new ground every day